



# PORT PIRIE REGIONAL ART GALLERY

## *ANNUAL REPORT 2012-2013*

Port Pirie Regional Art Gallery Incorporated  
3 Mary Elie Street (PO Box 481) Port Pirie SA 5540  
Ph 08 8633 0681 Fax 08 8633 0672  
[info@pprag.org](mailto:info@pprag.org) [www.pprag.org](http://www.pprag.org)

**October 2013**

This document has been prepared by the Port Pirie Regional Art Gallery.

**Copyright**

This publication is copyright. Apart from any use permitted under the *Copyright Act 1968*, no part may be reproduced by any process without prior permission of the Port Pirie Regional Art Gallery. Requests and enquiries concerning reproduction and rights should be directed to the Director, PO Box 4817, Port Pirie, SA 5540 or by email [director@pprag.org](mailto:director@pprag.org)

**Disclaimer**

The Port Pirie Regional Art Gallery, their employees and their servants do not warrant or make any representation regarding the use or results of use of the information contained herein as to its correctness, accuracy, currency or otherwise. The Port Pirie Regional Art Gallery, their employees and their servants expressly disclaim all liability or responsibility to any person using the information or advice contained herein.

## Contents

Strategic Direction 2012-15.....	4
Board of Management.....	5
Chairperson's Report.....	6
Vice-Chairperson's report.....	8
Secretary's report.....	8
Treasurer's Report.....	9
Member's Reports.....	10
Retiring Board Members.....	11
Director's report.....	12
Strategic Vision 2012-15.....	15
Goal One: Port Pirie and the Southern Flinders region has a diverse range of quality exhibitions and educational opportunities.....	16
Goal Two: Our community is engaged and has opportunities for involvement in the Gallery.....	20
Goal Three: Existing partnerships are maintained and new partners engaged to ensure the operation of the Gallery into the future.....	22
Goal Four: The community values the Gallery as a community resource.....	24
Goal Five: Technology enhances the operation and promotion of the Gallery and its services.....	25
Goal Six: Staff and volunteers use their skills and knowledge to achieve the Gallery's purpose.....	26
Goal Seven: The Gallery has good corporate governance.....	27
The 2012-13 Exhibition Program.....	28
Audit report and Financial Statements 2012-13.....	37

## Strategic Direction 2012-15

### Vision

*Bringing art to the people and people to the arts*

### Mission

*To deliver opportunities for the people of the Southern Flinders region to value and understand the importance of art and culture in our community*

### Goals

**Goal One:** Port Pirie and the Southern Flinders region has a diverse range of quality exhibitions and educational opportunities

**Goal Two:** Our community is engaged and has opportunities for involvement in the Gallery

**Goal Three:** Existing partnerships are maintained and new partners engaged to ensure the operation of the Gallery into the future

**Goal Four:** The community values the Gallery as a community resource

**Goal Five:** Technology enhances the operation and promotion of the Gallery and its services

**Goal Six:** Staff and volunteers use their skills and knowledge to achieve the Gallery's purpose

**Goal Seven:** The Gallery has good corporate governance

## Board of Management

### Chairperson

Jodie Trimble  
(Community)

### Secretary

Sue Chivell  
(Community)

### Board Members

Dianne Patterson  
(Governance)  
Neil Hann  
(Arts/Education)  
Catherine Hamm  
(Legal)

### Vice-chairperson

Mike Basely  
(Governance)

### Treasurer

Rosalie Bonekamp  
(Finance)

Ruby Miller  
(Volunteers' representative)  
Tina Moore  
(Arts)  
Veronica Travers  
(Education)

### Volunteers

Nita Beard  
Lorraine Chapman  
Barbara Hall  
Beverley Isidro  
Ruby Miller  
Catherine Couzner

Henry Beard  
Graham Chapman  
Pat Dale  
Sandra Gurr  
Joan Perkins

### Gallery Staff

Director:  
Kirstie Jamieson  
(until December 2012)  
Jenni Frost  
(commenced January 2013)

Administration:  
Janet Jansen  
(until April 2013)  
Lynne Walden  
(commenced June 2013)

## Chairperson's Report

### Jodie Trimble

Wow what a year, the first for our 2012-2015 Strategic and Business Plan.

2012-2013 has been a year of challenges and change for the Port Pirie Regional Art Gallery. The dark clouds that hung over us at times have showered us with new opportunities. We have laid new foundations revitalising the operations of the Gallery thus enabling us to embark on new and needed ventures.

The 2012-2015 Port Pirie Regional Art Gallery Strategic Plan gives high priority to the:

- Extending its reach and impact in Port Pirie and the Southern Flinders region so that it is known as a relevant and valuable community and regional asset;
- Sustaining current activities and building capacity to deliver its goals; and
- Building strong stakeholder relationships and sourcing additional resources through new sponsorship and partnerships so that it has sufficient funds to be sustainable.

The activities described in this annual report demonstrate our delivery of these priorities.

The year started with Port Pirie Regional Council agreeing to continue contributing significant funds towards the Gallery's operations for another three years. The Council contributed \$76,500 this year and added a further \$5,000 for the annual Port Pirie Art Prize. This effectively keeps the Gallery's doors open and enables us to get on with the business of 'bringing art to the people and people to the arts', our contribution to the development of Port Pirie's Tourism and Arts Centre precinct and the broader community.

In September the Port Pirie Regional Art Gallery signed a new funding agreement with Country Arts SA. This is the first time we have had a multi-year agreement with Country Arts SA and as such we have been able to plan and budget with more certainty than previous annual funding arrangements allowed. Country Arts SA is contributing \$25,000 per annum for the next three years towards covering the Gallery's operational expenses. With this agreement has come formalised reporting and more direct contact with Country Arts SA.

In September, Gallery Director Kirstie Jamieson announced that after six years of service she would not be seeking to renew her contact with us after December 2012. Kirstie had been working 2.5 days a week as Gallery Director and 2.5 days a week as Country Arts SA's Development Officer Mid North & Southern Flinders.

The Gallery's Board of Management took this opportunity to review the organisation's financial situation and staffing needs towards achieving our strategic goals. We decided not to renew our shared staffing arrangement with Country Arts SA for the twelve months offered under their new Creative Communities Partnership Program. Instead we opted to employ a Gallery Director 3 days a week on a 2 year contract. We felt this would give the Gallery more stability and staff time towards pursuing and achieving the Gallery's objectives.

In January 2013 we employed Jenni Frost as our new Gallery Director. Jenni ran the Belalie Art Gallery in Jamestown for many years and has also been an organiser with the Bundaleer Festival.

In May the Gallery's full-time Administration Officer, Janet Jansen, resigned after nine years to take up a new role. Lynne Walden is our new Administration Officer and works in the office three days a week. Lynne is an accountant with experience in business and local government. In June the Gallery Director's role was increased to 4 days a week.



These changes presented an opportunity for the Board of Management and new staff team to review all Gallery operations. We have:

- Streamlined administration processes that has seen a saving in staff time and money spent on some areas of operation;
- Improved financial management systems ;
- Worked on creating a comprehensive operations and policy manual; and
- Gained new sponsors from the local community and put in a submission to Bank SA, our first attempt at seeking sizable corporate sponsorship.

Through this period of flux, staff and volunteers maintained the Gallery's exhibition program. We have welcomed many Gallery members, friends and artists to 'their' Gallery for successful opening events and other activities. Highlights have been:

- Nalda Searles: *Drifting in My Own Land*. Featured artist talks and a booked out weekend workshop run by Searles, a fibre textile artist who visited from Western Australia;
- *Archers Arcadia: Automata Art* by David Archer. This interactive exhibition drew over 2,000 visitors for a look and a play. Archer travelled to Port Pirie to run workshops for school aged children;
- *A Country Woman's Wardrobe*. Our most popular exhibition of the year opened with a stylish High Tea fundraiser for Cancer Research;
- ART JAM. This school holiday art program has been set up and run by Board member Sue Chivell. Sessions have been booked out with kids asking for more! The Port Pirie Men's Shed made easels that they have donated for workshop use;
- New members recruitment drive with new benefits offered; and
- Sponsors Night. This was the first time we hosted an event to thank our sponsors for keeping the Gallery's doors open. The night was well attended by Country Arts SA and Port Pirie Regional Council representatives as well as local business sponsors.

On behalf of the Board of Management, I would like to thank ongoing sponsors Southern Cross Television, Pisani Group, Jan Pana Graphic Design, and Automatic Print for the important services they provide. The Picture Framers continues to give discounts to Gallery members. We were delighted to welcome a number of new sponsors this year, Belalie Wines, and 2013 Port Pirie Art Prize sponsors Stuart Wood, Alice Seidel Photography and Dr Helen Robertson.

The Gallery continues to benefit from the effort and commitment put in by our team of volunteers. They welcome Gallery visitors seven days a week and assist staff with exhibition changeovers and opening events.

I would like to thank Rosalie Bonekamp and Zoey, our new treasurer and baby daughter, who spent many hours a week keeping office administration and finances up to date while we were in the process of staff recruitment. Rosalie continues to keep a close eye on our finances and operations.

And I thank all Board members for generously contributing their expertise and time over the year, which has been a particularly demanding one for us all.

**Jodie Trimble**

**Chairperson**

**Port Pirie Regional Art Gallery**

## Vice-Chairperson's report

Michael (Mike) Basley. FAICD. JP.



Elected at the last AGM this has been my first year on your Board and a learning curve for me. With art I know what I like but can only claim to have studied the subject for three years at high school and am on the board mainly for a governance point of view.

I was asked to nominate for the board by an existing board member because of my background as a councillor and company director and the lack of male board members. As the only male member of the board I can now confirm that "Men are from mars and women are from Venus" but it has been a great experience working with a group of dedicated hard working women who give freely of their time to ensure we have a first class art Gallery in the region.

If there are any men out there with an interest in the arts I would encourage you to nominate at the next general election.

During the year I attended a workshop run by Dr Steve Brown and gained valuable information on event design and management.

The board now has a Policy Action Group and we are in the process of updating all board policies and bringing them together on one document for ease of access. The board also intends to upgrade the budget process to ensure we are completely open and transparent.

I look forward to the coming fiscal year.

Mike Basley

Vice-Chairperson

## Secretary's report

Sue Chivell



I have the great joy of summarising my year for 2012/2013. I am Secretary of the Port Pirie Regional Art Gallery Board and loving every minute.

One of our strategic directions has been to engage the community so I thought we could invite the outside into the Gallery and promote it as a place of interest and activity. A few of us had the idea of holding an art workshop in the school holidays so on the 24th January 2013 the Gallery held its first "Imagine, Create, Inspire" workshop. Sixteen Children aged 5 to 15 attended this successful workshop, a gold coin donation was the entry and art was made from a variety of recycled items.

Learning and growing from this event was the idea of an "Art Jam" workshop. With the support of the board I engaged the Industrial Therapy Workshop to make 8 double sided easels for use at our workshops. On 15th of July we held our second "Imagine, Create, Inspire" Art Jam workshop for children age 10 – 15. This was capped at 10 people and cost was \$20 per child inclusive of materials. We learnt to make snowflakes, brainstormed what winter meant to us and created a winter themed masterpiece. Mess and noise was the common denominator for both events but feedback from both has been awesome, we hope to continue this tradition of offering a themed Art Jam workshop for children to express themselves through art each school holidays.



I assisted with the Gallery information stall at the Port Pirie Producers Market on 14th July 2013. Our goal was to increase awareness and promote memberships. I also assisted and sang at the inaugural Sponsors evening which was held to say thank you to all Gallery sponsors.

My final project which I thought was going to be a breeze was to invite the Port Pirie service clubs into the Gallery for a meet and greet and preview an exhibition. After a few technical difficulties we held the event on Thursday 25th July, unfortunately the response was not large however those who attended enjoyed coffee and cake with the board members and hearing Tina Moore, printmaker speak about her art.

I can't wait to see what is in store for us next year!

**Sue Chivell**

**Secretary**

## Treasurer's Report

**Rosalie Bonekamp**

I am pleased to present to you the audited Financial Statements of the Port Pirie Regional Art Gallery for the year ended 30 June 2013.

I have been treasurer of the Port Pirie Regional Art Gallery for just over 12 months and I must say my first year has been very interesting to say the least! With the departure of Kirstie Jamieson and Janet Jansen, the Board and I faced a number of challenges. We are very fortunate however to welcome Jenni Frost our new director and Lynne Walden our new administration officer. Lynne has helped me tremendously over the last few months and with her experience and knowledge she has made my work a lot easier.



The Statement of Income and Expenditure for the 2013 financial year shows a loss of \$8,839 compared to a profit of \$2,062 in the previous financial year. The main reason for the loss is the payment of \$9,042.64 for long service leave paid to Janet Jansen.

The Gallery's main sources of income are received from the Port Pirie Regional Council and Country Arts SA. We also received a grant from Nyrstar for the Studio exhibition and a grant from Country Arts SA for the Archers Arcadia Exhibition. Donations income increased from \$1,450 to \$2,254 and member's income increased from \$1,105 to \$1,805 respectively in the 2011/2012 financial year compared to the 2012/2013 financial year.

I would like to thank the Port Pirie Regional Council and Country Arts SA for their continued support without which there would be no Gallery. Thank you also to Nyrstar and our members who continue to support the Gallery. The Port Pirie Regional Art Gallery also receives a number of in kind sponsors from Southern Cross Television, Automatic Print, Jan Pana Graphic Design and Pisani Accounting, thank you for your sponsorship and patronage.

There were no major or unusual expenses during the financial year apart from the long service leave as mentioned above.

Looking to the future, a detailed budget has been drawn up starting from July 2013 and is set up in line with the strategic plan. I hope this budget will keep us focused on the goals and objectives as set out in the strategic plan and help us in achieving these.

There have been a number of changes on the reporting side in MYOB. For example the directors and administration wages are now split in great detail so as to reflect the time spent on each activity, exhibition, and event. Furthermore exhibitions, workshops and any other events now have their own job number in MYOB so that all expenses and income for a particular item can be

contributed to that unique job. I hope with this information we will be able to accurately account for how much income and expenses and therefore the profit or loss we have generated from each activity in the Gallery. This will also help the Board to make decisions on what exhibitions, workshops and events have been more popular and created more income for the Gallery.

In the next financial year we are also going to be focusing on fundraising and fund raising activities to generate more income for the Gallery so that we can improve the quality and enjoyment of the Gallery for our members and the community.

All in all I have had a very enjoyable year and would like to take this opportunity to thank the Board, Jenni and Lynne for their support and hard work.

**Rosalie Bonekamp**

**Treasurer**

## Member's Reports

**Veronica Travers**

The following is a report on the activities that I have been involved in as part of the Port Pirie Regional Art Gallery Board.

I attended a session where I met some of the board and decided whether I would like to join so I attended the AGM and became a member of the board.

When possible, I have attended the monthly board meetings and participated in the discussions at these meetings.

Late in 2012, the Gallery Director resigned and I was part of an action group to develop a recruitment plan.

There were several special meetings where we drafted the position description and prepared the advertising. I reviewed applicant documentation as part of a panel and the result was the appointment of Jenni Frost as the Director.

I nominated to be a member of the policy committee. We met monthly on the fortnight before the board meeting. We developed a Time Off In Lieu staff policy and began to look at policies relating to publishing and the Contract forms for artists booking the Gallery.

In April 2013, the Administration Assistant resigned and we began another round of recruitment. I was part of the committee which developed the revised position description. This committee then met again to review the applicants' paperwork. We developed a short list of people to interview. The outcome of this was the appointment of Lynne Walden.

During this time without administration support, the board members were called to assist and I spent approximately six hours over several Saturday's entering data for the upcoming Patterns of Spirituality Exhibition.

Thank you for the opportunity to be part of this group. I am enjoying my membership so far.

**Veronica Travers**

## Retiring Board Members

Three Board members retired during the year. The Board acknowledges and thanks them for their contributions and service to the Gallery.



### **Janet McWilliams**

Janet McWilliams served as Chairperson for 2011/2012. She stepped down from the Board at the end of July to head to Vancouver with her family. Janet also served as Vice Chair 2009/2010. With her background in business and project management Janet led us through the preparation of our 2013-2015 Strategic and Business Plan. Importantly Janet also negotiated our present multi-year funding agreement with Country Arts SA.



### **Neil Hann**

Port Germein based artist Neil Hann resigned from the Board in February having being back on the Board since 2008. Neil was a valued member of the Board with his insight, ability to challenge with tough questions and his determination to see the Gallery strive greatly appreciated. Neil continues to help out at the Gallery with exhibition installations while he pursues new ventures with Germein Art Focus.



### **Tina Moore**

Laura based print maker Tina Moore resigned from the Board in April, having joined in 2011. Tina secured new sponsors for the 2013 Port Pirie Art Prize and as a result new prize categories have been established.

## Director's report

Jenni Frost



In November last year an email popped into my inbox with the title '*I encourage you to apply for this!*'

It was for the Directors position at the Port Pirie Regional Art Gallery. After a bit of research into the position and some further encouragement from family and friends I did apply thinking 'no way' but 'why not'.

I clearly remember my interview and the call few weeks later offering me the position, taking a deep breath and accepting. This was the beginning of my journey, the first of many as I travelled from my home in Jamestown and across the Range to start work in what is a wonderful Gallery and art space, with a strong tradition from its

inception in 1992 to 2013 when I took over from Kirstie Jamieson who had very capably held the position for the previous five years. I had big shoes to fill!

I started on 2nd January and was welcomed by Janet Jansen, Administration Assistant, volunteers and members of the Board of Management.

Archers Arcadia, an exhibition by automaton artist David Archer was on at the time so the Gallery was alive with movement and colour, a great way to start in my new role as Director. David gave an informative and humorous talk on the exhibition, his inspiration and techniques used for his extraordinary sculpture work. He also led two children's workshops. Each child made a Wacky Wire Critterbug under his expert guidance. His natural energy and humour to engage young people made these workshops a huge success. This exhibition attracted exceptional numbers of people of all ages to the Gallery, but was specifically successful for children and families on school holidays.

The next exhibition was the Southern Flinders Senior School Art and Design Exhibition incorporating the Clan Rodda Award. The art works were judged by Tricie Hall, retired Art teacher and practicing artist and Jan Pana, sponsor of the Design Award. Opening night went well, with students, family and friends in attendance. I learned of the history and significance of the Clan Rodda Award which I wish to support and continue into the future. Thank you to Geoff Brock, Independent Member for Frome, for his ongoing support and to Mayor Brenton Vanstone for opening the exhibition and to Neil Hann for helping me with the installation.

It was with great anticipation and excitement we began the task of installing 'A Country Women's Wardrobe'. Curated by Tina Hooft, a passionate collector of vintage clothes, the Gallery was transformed into a department store with fashion and accessories from the 1920's to the 1960's. A high tea was held on opening day with proceeds going to cancer research. Tiered cake stands were laden with all things sweet and delicious, nostalgia filled the room as visitors recalled the days of country dances, annual balls and 'dressing up' to go to town. Thank you to Councillor Gerry Chivell who opened the exhibition.

Young artist Joel Plevin from Wilmington exhibited in the Vivienne Crisp Gallery and 'Mapping the Island' a 'CAST' touring exhibition from Tasmania was shown in the Flinders Gallery. Mapping the Island was extraordinary in its interpretation of a theme and attention to detail. It was encouraging to see such high quality art work in the Gallery. During this exhibition, members of the Burra Men's Shed enjoyed morning tea during a break while on tour of Port Pirie and the Smelters. Thank you to volunteers Pat Dale and Beverly Isidro for providing the scones, cakes and sandwiches, setting up and serving. Some very satisfied gentlemen and a few dollars for the Gallery.

On the 17th May, as part of Volunteer Week we hosted a Morning Tea for all our Volunteers. Vital to everything we do the Gallery we would not be able to function without the time given freely by our volunteers. Thank you again!

This year saw the beginning of the planning stages of a Port Pirie Regional Council 'Cultural Plan'. Regular meetings were held with Cultural Precinct Manager Peter Arnold, Pam Menadue (Library), Dean Begley (IT Centre) Belinda Jackson and Tabitha Runkell (VIC), Sandra Waite (Community Development) and Rhys Millington (Event Coordinator) from the Port Pirie Regional Council. I am hoping this strengthening relationship between us will produce beneficial outcomes in promotion and raising the profile of the Cultural Precinct and with that, the Art Gallery.

In April, Janet decided to take up a new role with Country Arts SA at the Northern Festival Centre. After nine years in the position of Administration Assistant for the Gallery she took the opportunity to move on and create some changes in her working life. A dinner was held to recognise the contribution made by Janet, which was well attended by Board members and volunteers who showed their appreciation with cards and a gift. We wished her well in her new position.

The big task of advertising and processing the applications for the position of Administration Officer was underway as the touring exhibition 'Studio – Australian Painters Photographed' arrived. Thank you to Nyrstar for sponsoring this exhibition of vibrant and detailed photographs by R. Ian Lloyd illustrating the relationship artists have with their studio. 'Studio' was stunning in its colour and content and one of the highlights of the exhibition program. Thank you to Jan Pana for her designer's eye to help me install the exhibition.

With the support of Board members and volunteers we kept the Gallery operational during the recruitment period. Even though this was a challenging time I felt I grew more into the role as Director. It enabled me to start seeing the 'big picture'. Things may have seemed chaotic but we kept the Gallery open and events and exhibitions to schedule, also managing to keep most of the office tasks up to date. A big thank you to Board members Rosalie, Veronica and Chairperson Jodie who kept things ticking along with things that just had to get done.

At last, on the 12th June we welcomed Lynne Walden to the position of Administration Officer. Lynne brings with her a wealth of experience from past roles and positions. I feel privileged to have her as member of the Gallery staff and hope our working relationship will remain positive and strong into the future.

A new initiative, a Sponsors Evening, was held on the 14th June. This event is intended to show appreciation to our sponsors, partners and supporters. It was also encouraging to have three representatives from Country Arts make the effort to attend; Steve Saffel (CEO), Anthony Peluso (Community Engagement) and Anna Goodhind (Visual Arts Coordinator). It was at this event that wine and tastings were supplied by David Box of Belalie Wines and he will continue to support us at future events and openings.

On Saturday 22nd June the next exhibition 'Patterns of Spirituality Art Prize', organised by Will Brooks on behalf of the Catholic Diocese of Port Pirie and the Anglican Diocese of Willochra, which is held every two years, was opened. The theme this year was 'the Grace of God'. Thanks again to Neil Hann who helped with the installation.

Art Jam sessions have been added to the program of events for kids during the school holidays. An intense art making session in one and a half hours from blank canvas to work of art! Hopefully these will continue and go from strength to strength as the word gets out how much fun they are and the art Gallery is a great place to be! Thanks to Board member Sue for her creative energy and the Port Pirie Men's Shed for making the easels.

I would sincerely like to say how much I have appreciated the support of all the Board Members and I must make special mention that a new camera was purchased thanks to the generosity of Mike Basely. Thank you Mike!

As always, a big thank you goes to the Port Pirie Regional Council, Country Arts SA and all our sponsors, large and small whose commitment and support make the delivery of a wonderful

program of exhibitions and events in the Gallery an important part of the cultural life of our community and our region.

Everyone's support and commitment has been invaluable in this time of transition. It has been challenging and a bit unstable in my first six months as Director but I feel inspired and supported to make the Gallery a vital, energised and creative place with exhibitions and events that can showcase a best practice regional Gallery for the future.

**Jenni Frost**

**Director**



Image: Gallery Volunteer Christmas Celebration and Farewell for outgoing Director Kirstie Jamieson.

## Strategic Vision 2012-15

<b>Goal One: Port Pirie and the Southern Flinders region has a diverse range of quality exhibitions and educational opportunities</b>
Provide the community with experience in a variety of art forms
Provide opportunities for young people to engage with the Gallery
<b>Goal Two: Our community is engaged and has opportunities for involvement in the Gallery</b>
Grow volunteer base
Take the Gallery out to the community
Ensure a vibrant active Board of Management
"Capture" visitors to the arts precinct
Build our membership by 10% a year
Increase the participation of Gallery members
<b>Goal Three: Existing partnerships are maintained and new partners engaged to ensure the operation of the Gallery into the future</b>
Build sustainable relationships with key funding providers
Source \$30,000 new sponsorship from groups, business and organisations over 3 years
Work closely with our partners and sponsors
<b>Goal Four: The community values the Gallery as a community resource</b>
Actively promote the Gallery's program and services to ensure community awareness of its role and value
Grow visitor numbers
<b>Goal Five: Technology enhances the operation and promotion of the Gallery and its services</b>
Keep up to date with new media and acquire appropriate technology
<b>Goal Six: Staff and volunteers use their skills and knowledge to achieve the Gallery's purpose</b>
Ensure staff can make the best use of their skills and knowledge, and acquire necessary new skills
Ensure a robust volunteer group
<b>Goal Seven: The Gallery has good corporate governance</b>
Sound planning to ensure everyone knows what they need to do
Transparent financial record keeping
Collection conserved, maintained and well documented

## Goal One: Port Pirie and the Southern Flinders region has a diverse range of quality exhibitions and educational opportunities

### Provide the community with experience in a variety of art forms

2012-2013 saw the Port Pirie Regional Art Gallery present an exhibition program showcasing a diverse range of artistic practice that included fibre art, photography, and automata alongside more traditional art practices.

Quality exhibitions were drawn from a number of sources. 57% of exhibitions were sourced from local and regional artists and 43% were touring exhibitions.

Touring exhibitions give our regional community and our visitors ready access to exhibitions from major cultural institutions. Inter and intra-state touring exhibitions provide opportunities for visitors to experience art work that may challenge the perspective and appreciation of art in their own minds and the role of art in the wider community. These exhibitions are accompanied by comprehensive education packs, catalogues, exhibition rationale and opportunities for artist talks.

This year Port Pirie Regional Art Gallery hosted the following travelling exhibitions from Country Arts SA, ART ON THE MOVE, Visions of Australia, CAST, NETS and Museums and Galleries NSW:

- *Drifting in My Own Land – Nalda Searles*
- *Rita Hall Museum Studies 1969-2009*
- *Converse(ly)*
- *Archers Arcade*
- *Mapping the Island*
- *Studio - Australian Painters Photographed*

For exhibition details please refer to Exhibitions Program page 28.

### *Educational Opportunities*

Touring exhibitions included educational resources for use by teaching staff. The Gallery also organised the following educational activities to complement exhibitions:

#### *Drifting in My Own Land - Nalda Searles Artist Talk and Workshop*

*10-12 August,*

*2012*

Searles gave an artist talk on the opening day of her exhibition. The Gallery also organised for Searles to run a 2 day fibre arts workshop. Over the weekend 14 participants each produced a 3 dimensional object using plant material and textiles. The workshop was booked out with the majority of participants travelling from Adelaide to attend.

#### *Turner from Tate Preview Talk*

*6 December, 2012*

David O'Connor, Public Programs Manager, Art Gallery of South Australia shared his insights into the work of JMW Turner while the exhibition was at the Art Gallery of South Australia

#### *A Country Woman's Wardrobe Floor Talk*

*16 March, 2013*

Collector Tina Hooft spoke of her passion for the vintage clothing she'd been collecting since she was 18 years old. Afternoon tea was served.



Attendance: 60

### Archers Arcadia - David Archer Artist talk

16 January, 2013

David gave an evening talk to Gallery members about his mechanical creations.



## Provide opportunities for young people to engage with the Gallery

### Young People and Exhibitions

Young people have a number of opportunities each year to participate in exhibitions at the Gallery.

- *The Port Pirie Art Prize* offers a Youth Encouragement Award to artists 25 years and under.
- *The Southern Flinders Senior School Art and Design Exhibition* showcases the works of senior students from around the Southern Flinders Region. Prize money is given. The aims of this exhibition are to:
  - Reward and encourage students towards excellence in the visual arts
  - Foster the development of the visual arts in the region
  - Encourage relationship with Port Pirie Regional Art Gallery as an organisation supporting visual arts in the Southern Flinders Ranges Region
  - Foster careers in the visual arts
  - Support the value of studying visual art in schools

Sixteen students participated in this year's exhibition.

- *A Vibrant Outback Meets the Sea - Joel Plevin*. Joel a 15 year old artist who lives in Wilmington was invited to hold a solo exhibition at the Gallery. *A Vibrant Outback Meets the Sea* was a collection of impressionist paintings, inspired by the unique Flinders Ranges and the west coast. He sold a number of art works.



Presentation of Port Pirie Art Prize Youth Encouragement Award by Geoff Brock to Maddie Coombe, supported by her family

### Active Schools Program

Local and regional schools are sent the Gallery exhibition program and informed about the educational resources that accompany touring exhibitions. Talks with visiting artists were arranged for school groups.

During the year 17 student groups visited the exhibitions, a total of 279 students accompanied by their teachers.

	<b>2012-13</b>	2011-2012
School student numbers	<b>279</b>	506

### School Group Visits to the Gallery

Date	School	Student Numbers
August 2012	John Pirie Secondary School (I Can Be Me)	5 plus 1 teachers
	John Pirie Secondary School (Year 10 Art)	10 plus 1 teacher
	John Pirie Secondary School (I Can Be Me)	9 plus 2 teachers
	Port Germein Primary School	8 plus 2 teachers
	Solomontown Primary School (Year 3-4)	23 plus 1 teacher
October	John Pirie Secondary School (I Can Be Me)	4 plus 2 teachers
	John Pirie Secondary School (Year 10 English)	12 plus 1 teacher
January 2013	Airdale Vacation Care	10 plus 2 teachers
February	John Pirie Secondary School (Year 11/12 Art)	16 plus 1 teacher
March	Port Pirie Special School	12 plus 4 teachers
April	John Pirie Secondary School (Special Ed.)	8 plus 3 teachers
	John Pirie Secondary School (I Can Be Me)	3 plus 1 teacher
	John Pirie Secondary School (Year 8)	15 plus 1 teacher
	John Pirie Secondary School (Year 8)	18 plus 1 teacher
	Pt. Pirie West Primary	29
May	John Pirie Secondary School (Special Ed.)	7 plus 1 teacher
June	St Marks College (various)	90 plus teachers
	<b>Total students</b>	<b>279</b>

## Artist Talks and School Holiday Workshops for Young People

### *Archer's Arcadia Artist Talks and Critterbug Workshops*

David Archer travelled from Adelaide to run two Wacky Wire Critterbug Workshops for 10 -15 year olds. His visit was funded through the Country Arts SA Skills Development Programme.

Workshop participants: 25

Special Group Visit from Airdale Vacation Care for 8-12 year olds: 10 children and 2 adults

18-19 January, 2013



### *Drifting in My Own Land - Nalda Searles Artist talk*

Nalda Searles spoke about her work with year 10 students from the John Pirie Secondary School.

10-12 August, 2012



### *Art Jam - Imagine Create and Inspire*

This new school holiday art program has been set up and run by Board member Sue Chivell.

Workshops are held for young people aged 5 to 15 years. A nominal fee is charged to cover the cost of materials. The Industrial Therapy 'Men's Shed' of the Port Pirie Regional Health Service Inc. made six easels that they have donated for workshop use. Art Jam sessions have been booked out with kids asking for more!

### *Art Jam - Craft*

24th January, 2013

In this first ART JAM workshop participants created two and three dimensional works of art on paper using art and craft techniques, pencils, paint, card, glue, buttons and found objects.

Participants: 16



## Goal Two: Our community is engaged and has opportunities for involvement in the Gallery

### Grow Volunteer Base

The Gallery continues to rely on the valuable contribution of volunteers to staff the Gallery on a regular basis and provide that first point of contact for visitors. Eight volunteers are on a weekly roster and 3 are on a casual or as needs basis.

	2012-13	2011-2012
<b>Volunteers' Hours and Value</b> (hours at \$24.50)	<b>2,011 / \$49,263</b>	2,187 / \$53,594

**New volunteers recruited:** 3

On 17 May, as part of Volunteer Week we hosted a thank you morning tea for all our volunteers. A certificate of recognition and appreciation was presented.

### Take the Gallery out to the Community

The Gallery has also supported local community initiatives and presented to community groups including:

**Port Pirie Chamber of Commerce:** Gallery Chairperson, Jodie Trimble, addressed the Chamber meeting about the role of the Gallery in the community. This was also an opportunity to raise awareness amongst the local business community of the need for financial and in-kind sponsorship to support the Gallery activities.

#### **Relationships strengthened in the Cultural Precinct**

Development of a cultural precinct plan for the Gallery, Library, Visitor Information Centre, Event Management and Cultural and Community Development officers to enhance and coordinate through the Cultural Precinct new and existing community events.

### Ensure a vibrant active Board of Management

The membership of the Board is skills based and can have up to 10 members. 2012-2013 commenced with a full Board of 10 after a recruitment drive which saw four new members join. They brought with them high level skill sets in law, finance, education and governance.

Board meetings have been held monthly with special meetings convened to proceed staff recruitment matters.

The Board formed several Action Groups to work on specific issues.

These are:

- Staff Recruitment,
- Policy Development,
- Sponsorship, and
- ART Jam workshops.

Board of Management members attended a half day sponsorship workshop run by Gallery Director, Kirstie Jamieson. They discussed objectives and strategies, sponsorship opportunities and packages to be offered by the Gallery, and identified local and regional businesses to target. This workshop followed on from the Board's meeting with Alison Beare from Arts Support in June 2012. Alison discussed creating links to foundations and philanthropic support.

The Sponsorship Action Group prepared a proposal for a youth activities program that was submitted to Bank SA for funding. Whilst unsuccessful, feedback received will assist us in preparing stronger and hopefully successful proposals in future.

A number of Board members picked up Office Administration tasks while new Gallery staff were recruited and trained. The Chair and Treasurer meet with Gallery staff on a weekly basis to support and oversee the running of the Gallery.

As part of their role, Board members also attend exhibition openings and events. They are actively involved in the running of events and workshops, assist with catering at special events and have made donations of equipment for workshop and office use.

## “Capture” visitors to the art precinct

Signage has been improved at the Gallery entrance with posters displayed showing “What’s On” and artworks are also hung in the entrance to attract visitors to view the exhibition.

A strengthened relationship with the Tourism staff and volunteers has seen more visitors directed into the Gallery. Gallery news also features in the Cultural Precinct’s monthly column that appears in The Recorder newspaper.

### *Burra ‘Men’s Shed’ Morning Tea*

*15 April, 2013*

Members of the Burra Men’s Shed dropped in to enjoy a morning tea break while touring Port Pirie and the Smelter. Thank you to volunteers Ruby Miller, Pat Dale and Beverly Isidro for providing the scones, cakes and sandwiches. A talk about the exhibitions, *Mapping the Island* and Joel Plevin – *A Vibrant Outback Meets the Sea*, was given by the Gallery Director. \$84 was raised for activities to support Gallery volunteers.

Attendance: 12

## Build our membership by 10% a year

At the September Annual General Meeting, annual membership fees were reviewed and increased to better cover the costs of exhibition openings and other member activities. Membership benefits now include a 10% discount on art work purchases. The importance and benefits of Gallery membership is more actively promoted by Gallery staff and Board Members at all Gallery events.

Board members took up the challenge of each signing up 5 new members to the Gallery.

Member numbers have increased to 124 at 30 June 2013 from 102 for the previous year, an increase of 22%.

## Increase the participation of Gallery members

All Gallery members are invited to participate in the program of exhibition openings, workshops, artist talks and fundraising events. The exhibition program was sent out in poster form every six months. Most Gallery members have email for invites and reminder teasers and this has cut both postage and printing costs.

### *Members Exhibition*

*24 October – 11 November, 2012*

Each year the members have an exhibition of their artwork. It is a unique opportunity for them to exhibit as a group. In 2012 there were 33 participating artists and over 100 artworks on display.

### *Art Bus Trip*

*6 September, 2012*

The annual Gallery volunteers and members bus trip visited artists’ studios in the Clare Valley and Kapunda.

## Goal Three: Existing partnerships are maintained and new partners engaged to ensure the operation of the Gallery into the future

Build sustainable relationships with key funding providers

Source \$30,000 new sponsorship from groups, business and organisations over 3 years

### Work closely with our partners and sponsors

Each year the Gallery seeks funding to effectively keep the Gallery doors open and enable us to get on with the business of 'bringing art to the people and people to the arts'. The Gallery receives significant funding from the Port Pirie Regional Council and this year they agreed to continue to fund the Gallery operations for another three years. The Council contributed \$76,500 this year and a further \$5,000 towards the annual Port Pirie Art Prize exhibition.

The Gallery has signed a new multi-year funding agreement with Country Arts SA. This will allow us to plan and budget with more certainty than previous annual funding arrangements allowed. Country Arts SA is contributing \$25,000 per annum for the next three years towards covering the Gallery's operational expenses. With this agreement has come formalised reporting and more direct contact with Country Arts SA.

### Funding partners

Port Pirie Regional Council  
\$76,500 – 2012/13  
\$5,000 (Sponsorship – Port Pirie Art Prize Exhibition)



Country Arts SA  
\$25,000  
Shared Director/Arts Officer position  
(July to December 2012)



### Sponsors (Inkind)

#### Major

Southern Cross Television  
\$30,000



#### Other

Pisani Group Accountants & Business Advisors

Jan Pana Graphic Design

Automatic Print

\$7,500 Total



**Other Sponsors**

The Picture Framers  
 Belalie Wines

**Exhibition sponsors**

<b>Sponsor</b>	<b>Exhibition</b>
Nyrstar Port Pirie	<i>Studio – Australian Painters Photographed</i>
Catholic Church Insurance	<i>Patterns of Spirituality</i>
Caffe Florence	<i>Patterns of Spirituality</i>

**Prize sponsors**

<b>Sponsor</b>	<b>Exhibition and Prize</b>
Geoff Brock, (Independent Member for Frome)	<i>Port Pirie Art Prize - Youth Encouragement Award</i> <i>Southern Flinders Senior School Art and Design Exhibition - Youth Encouragement Award</i>
Picture Framers	<i>Port Pirie Art Prize (People's Choice Award)</i>
Jan Pana Graphic Designer	<i>Southern Flinders Senior School Art and Design Exhibition – Graphic Design Award</i>
Boylan Lawyers	<i>Patterns of Spirituality – All prizes</i>

**Sponsors' Night**

*14 June, 2013*

This was the first time we hosted an event to thank our sponsors. The night was well attended by Country Arts SA and Port Pirie Regional Council representatives as well as our local business sponsors. Wine and wine tastings were supplied by David Box of Belalie Wines.

Attendance: 20

	<b>2012-13</b>	2011-2012
<b>Partner &amp; Sponsorship funding</b>	<b>\$145,500</b>	\$140,500
<b>Donations</b>	<b>\$2,254</b>	\$1,449

## Goal Four: The community values the Gallery as a community resource

### Actively promote the Gallery’s program and services to ensure community awareness of its role and value

Exhibition and community activities are regularly updated on the Gallery Facebook page and website. These forms of media are of particular interest to visitors to Port Pirie and to artists from the region and beyond, to access information on workshops, funding, art prizes and exhibition information.

Each month, Board Member Ruby Miller talks on air with Trax FM 105.1 Community Radio presenters about art exhibitions and activities happening in the Gallery and around the Southern Flinders region.

The Gallery is increasingly receiving more media coverage. Media highlights include:

- *Drifting in My Own Land* - Nalda Searles TV Advertisement,
- *Port Pirie Art Prize 2012* TV Advertisement,
- *Archer’s Arcadia*: Recorder newspaper article and a news report on GTS BKN Southern Cross Television, TV Advertisement,
- *A Country Woman’s Wardrobe*: ABC North and West radio interview with Tina Hooft, Southern Cross Television news story and articles in The Recorder and Flinders newspapers. TV Advertisement,
- *Studio – Australian Painters Photographed*. This exhibition was covered by the Recorder newspaper and photographer R. Ian Lloyd was interviewed by Annette Mamer for ABC Radio North and West. TV Advertisement.

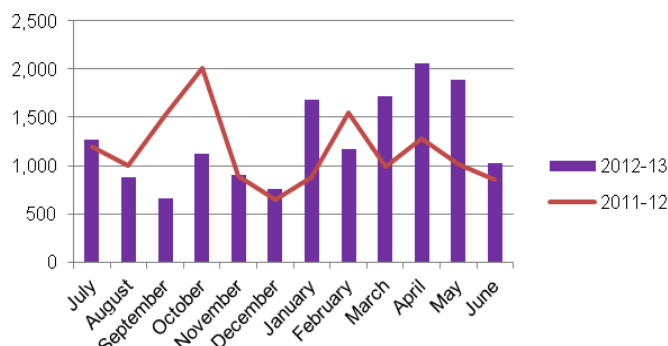
Media releases are distributed before and during each exhibition. There have been Radio ABC interviews to promote each exhibition.

### Grow visitor numbers

#### Visitor numbers

	2012-13	2011-2012
Visitors to the Gallery	15,124	13,817
Website hits	73,193	60,000

#### Visitors by month (annual comparison)





### Visitors by exhibition



## Goal Five: Technology enhances the operation and promotion of the Gallery and its services

### Keep up to date with new media and acquire appropriate technology

The Gallery has done the following:

- Digital projection is available for exhibitions with the vision to extend new technology facilities as required for future programming.
- Volunteers Grant 2013 received for a lap top and hard drive to assist in Gallery tasks by staff and volunteers.
- New digital camera was donated to keep high quality records of art work images and Gallery events.

## Goal Six: Staff and volunteers use their skills and knowledge to achieve the Gallery's purpose

### Ensure staff can make best use of their skills and knowledge and acquire necessary new skills

Our Staff bring to the Gallery diverse skills from a range of backgrounds, experiences and contacts. The Gallery is a member and participant of Regional Galleries Association of SA and Gallery Director Kirstie Jamieson acted as Treasurer for 2012.

The presentation of openings and special events has been revised with new catering featuring locally sourced food and wine. More special events are planned.

Special events held this year:

- A Country Women's Wardrobe - High Tea fundraiser
- Sponsors Night – local wine tasting, Belalie Wines.

### Ensure a robust volunteer group

The Port Pirie Regional Art Gallery prides itself on its dedicated group of volunteers.

Volunteers fulfil the following roles:

- Gallery Assistant: to provide visitors with appropriate Gallery Exhibition information, light administrative support.
- Weekend Assistant: To provide visitors with appropriate Gallery Exhibition information and maintain security of the Gallery and Exhibitions.
- Changeover Assistant: to provide assistance to Gallery staff, artists and curators to install and uninstall exhibitions.
- Functions Assistant: to provide assistance to Gallery staff at openings, fundraising events, artists talks and public program functions.

Volunteers who attend the Gallery on weekends and public holidays receive an honorarium so we can confidently have the Gallery open 7 days a week.

Eight volunteers are on a weekly roster and 3 are on a casual or as needs basis.

New volunteers undertake police checks and participate in an orientation and operational procedures program. On the job training is undertaken and volunteers are offered opportunities to enhance their skills and professionalism further by participating in training programs run by other organisations. Volunteers have participated in training offered by Volunteering SA and Port Pirie Regional Council's InformationTechnology Resource Centre.

## Goal Seven: The Gallery has good corporate governance

### Sound planning to ensure everyone knows what they need to do

During the year the Board revised the following:

- Annual Membership period to be for twelve months from the date of application
- Port Pirie Art Prize – Open Prize to be non-acquisitive
- Policy review and revision (Policy Action Group)

### Transparent financial record keeping

The Board receives monthly financial reports to monitor the financial position and the annual budget. The Pisani Group provides support to ensure that the financial records are maintained in a proper manner. They review the records at the end of each quarter. An independent audit is conducted annually and the report is included as part of the Gallery Annual Report.

### Collection conserved, maintained and documented

The Art Collection is a substantial and culturally important collection which has been acquired over many years through the Port Pirie Art Prize in partnership with the Port Pirie Regional Council. The Gallery prepares reports on the condition of the artworks for purposes of collection management, risk assessment and insurance. The Gallery Collection contained a number of artworks that have been donated by members, individuals and artists.

### Acquisitions

There were two additions to the Gallery collection during the year.



Image: Rita Hall – Egret #9  
Gift from Rita Hall



Image: Neil Hann – Moon Above Nukina Trail  
A Gift from Kirstie Jamieson, (Director 2005 – 2012)

## The 2012-13 Exhibition Program

*Port Pirie Art Prize*

30 June – 5 August, 2012

Visitors: 1, 452

The *Port Pirie Art Prize* celebrated its 17th year of showcasing the works of artists inspired by the magnificence of the Southern Flinders Ranges region.

Forty eight artists from around Australia submitted 105 artworks. This year's judges were artists Kerry Youde from Burra and Kaylie Weir from Port Augusta.

Port Pirie Mayor, Brenton Vanstone, officially opened the exhibition and announced the winners with the assistance of Geoff Brock, Independent Member for Frome, who sponsored the Youth Encouragement Award.

The *Port Pirie Art Prize* is a collaboration between Port Pirie Regional Art Gallery and the Port Pirie Regional Council. Council contributes \$5,000 towards the exhibition.



Image: Simon Waters - *Down the Shack*

Prize winners:

Open Prize Winner:

Simon Waters (Maitland) - *Down the Shack*

Southern Flinders Artist Prize Winner:

Maryanne Scrutton (Port Pirie), *Bush Flower*

Photographic Prize Winner:

Lindall White (Port Pirie), *Rusted 2*

Youth Encouragement Award:

Maddie Combe (Port Pirie), *We as One*

Merit Awards:

Noel Dansie (Normanville), *Mulga Parrot*

Robert Landt (Maitland), *Wet to the West*

People's Choice Award

Deirdre Marshall & Rory Shirren (Port Pirie) - *Boomerang Boys*

*Nalda Searles: Drifting in My Own Land*

11 August – 16 September, 2012

Visitors: 1,091

Searles is a fibre textile artist who uses native plant fibres and found objects for the production of innovative fibre-textiles, sculpture and installation art works. Searles visited Port Pirie from her home in Western Australia to give a number of artist talks and to run a weekend workshop. This was a touring exhibition from Art On the Move supported by Visions of Australia.



Image: Siphon



Image: Kanga Couple by Nalda Searle

*Poetic Fibres - Fibrespace and Rocky River 'Riters*

22 September – 21 October, 2012

Visitors: 886

This was a collaborative exhibition between local writers group, Rocky River 'Riters and fibre artists, Fibrespace. The groups created works around three themes - From Desert to the Sea, Poetic Fibres and Verbal Visions.

The exhibition was opened by Marion McCall who also launched the latest book by the Rocky River 'Riters. Marion is a published poet, a pilot, and was awarded an OAM for service to aviation and the Australian Women Pilots' Association in 2011. She is also a very funny lady.



Image: Georgie Sharp - Outback Races



Image: Jonathon Hawkins-Clarke – Sea Desert

*The Gentle Arts, Embroiderers Guild of Port Pirie*

24 October – 11 November, 2012

*Port Pirie Regional Art Gallery Members Exhibition*

24 October – 11 November, 2012

Visitors: 1,041

***The Gentle Arts, Embroiderers Guild of Port Pirie***

The annual Gentle Arts exhibition features skilful embroidery, tapestry, lace making and patchwork pieces made by local Guild members. Guild members assist in the Gallery for the duration of the exhibition and are available to talk with visitors and demonstrate their crafts.



Image: Pincushion (detail)

***Port Pirie Regional Art Gallery Members Exhibition***

The membership of Port Pirie Regional Art Gallery includes many talented local artists. This annual exhibition was their opportunity to exhibit as a group – an interesting and inspiring exhibition.



Image: Port Pirie Regional Art Gallery members Exhibition 2012



Image: Clan Rodda, Four Dancers in a Studio



Image: Allen Sparrow - Hunting Goanna

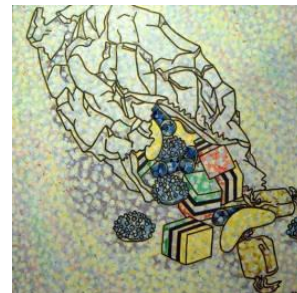


Image: Neil Hann - Mixed Bag of Allsorts

*Rita Hall, Museum Studies 1969-2009*

16 November – 16 December, 2012

*Converse(ly), The Artists Voice*

16 November - 16 December, 2012

Visitors: 728

*Rita Hall, Museum Studies 1969-2009*

*Museum Studies 1969-2009* chronicles Rita Hall's volume of work influenced by the collections of birds, reptiles and mammals at the South Australian Museum over the past 40 years. This exhibition features paintings, drawings and monotypes based on studies of bird skins in the South Australian Museum's ornithology department.

*Converse(ly), The Artists Voice*

*converse(ly), The Artist's Voice* featured the works of a network of artists who live in the Adelaide Hills and Fleurieu. The artists work in a variety of media including photography, painting, sculpture and mixed media. Their regional surroundings are explored and reflected in their works.

These two exhibitions were Country Arts SA Touring Exhibitions.



Image: Rita Hall, *Azure Kingfishers*, oil on canvas



Image: Andrea Num Glover, *Green River Dragon*, digital print on canvas



*Archers Arcadia, Automata Art*

21 December – 27 January, 2013

Visitors: 2,097

This highly successful exhibition featured David Archer's contemporary automata. His works are wry vehicles for ideas and narrations in the tradition of mechanical representations found on Victorian and Edwardian seaside piers. Visitors of all ages delighted in peering through lenses, turning handles and pushing buttons. Archer travelled from Adelaide to Port Pirie to give a number of artist talks and run workshops for school aged children.

This was a Country Arts SA touring exhibition.



Image: *In a Flap*



Image: *The Sword Swallower*

**Southern Flinders Senior School Art and Design Exhibition**

1 February to 17 February, 2013

Visitors - 604

This annual exhibition showcases the works of senior students from around the Southern Flinders Region. The aims of this exhibition are to:

- Reward and encourage students towards excellence in the visual arts
- Foster the development of the visual arts in the region
- Encourage relationship with Port Pirie Regional Art Gallery as an organisation supporting visual arts in the Southern Flinders Ranges Region
- Foster careers in the visual arts
- Support the value of studying visual art in schools

Sixteen students participated in this exhibition. The following three awards were presented:

**Clan Rodda Scholarship Award**

Students who completed Year 12 in 2013 were eligible for the Clan Rodda Award - \$1,000 towards continuing their studies in the Arts. The award, donated by the Port Pirie Regional Art Gallery, acknowledges the contribution to the arts by accomplished Port Pirie artist, Clan Rodda.

Clan Rodda is a local Port Pirie identity, artist and avid patron of the Port Pirie Regional Art Gallery. Clan began his studies in art in 1958 at the South Australian School of Arts and Crafts, graduating with a Diploma of Advertising Art in 1960. In 1965 he began studies at the renowned Julian Ashton School of Fine Art in Sydney. After his studies Clan became a teacher at the Julian Ashton School of Fine Art in 1968, where he worked until 1976.

**Clan Rodda Award Winner for 2013** - Wynne Plug-Berndt from Gladstone High School, for her works 'Collision' and 'Self'.



**Jan Pana Graphic Design Award** - Kai Pisani from Saint Marks College, for his works 'Kai Pisani Musician logo and application' and 'CD package'.

**Geoff Brock Youth Encouragement Award** - Nicole Cleggett from Gladstone High School for her works 'Untitled' and 'Abyss of the Mind'





Image: Southern Flinders Senior School Award and Clan Rodda Award opening night.  
 Mayor Brenton Vanstone, Geoff Brock, Member for Frome, Jenni Frost, Gallery Director, Judges Jan Pana and Tricie Hall, students and teachers.

*A Country Woman's Wardrobe*

23 February to 24 March, 2013

Visitors – 2,231

This exhibition showcased Tina Hooft's beautiful collection of vintage dresses, coats, hats, bags, shoes and costume jewellery worn by women of South Australia's Mid North region from the 1920s to the 1960s. The Gallery was turned into an old style department store with impeccably dressed mannequins and old shop display cabinets. This exhibition had great local appeal and drew plenty of visitors.

The exhibition opening was celebrated with a High Tea. It raised \$1243.2 for Breast Cancer Research.

Tina also gave a floor talk, speaking of her passion for collecting and preserving clothes and curating such an extensive collection.



Images: Exhibition Opening and High Tea.



Image: Women's Hats

*A Vibrant Outback meets the Sea* – paintings by Joel Plevin

29 March to 28 April, 2013

*Mapping the Island*

29 March to 28 April, 2013

Visitors – 2,188

*A Vibrant Outback meets the Sea* – Joel Plevin

This colourful collection of impressionist paintings, inspired by the unique Flinders Ranges and the west coastal areas was painted by 15 year old Joel Plevin who lives in Wilmington. Joel has always enjoyed drawing and in the last four years has started painting on canvas under the guidance of regional artist Neil Shepard. Joel is currently studying at Booleroo Centre District School and has won a number of art prizes.



Image: Joel Plevin's, Water Colours

*Mapping the Island*

Invited national and international visual artists and arts practitioners each received a section taken from a topographical map of Tasmania. The brief was to respond with an artwork in paper measuring 29 x 29 cm square. The resulting exhibition includes works that are the deeply personal, wonderfully witty and aesthetically masterful; each responding sensitively to the artist's sense of the place on the map section they were given.

This exhibition was Developed by Tasmanian Regional Arts and toured by Country Arts SA.



Image: Anne Mestitz Lost

**1:100,000**  
**MAPPING THE ISLAND**

Curated by Penny Carey-Wells and Diane Perndt

A CAST Touring Project



*Studio - Australian Painters Photographed*

4 May to 16 June, 2013

Visitors – 2,188

A Museum and Galleries Touring Exhibition

R. Ian Lloyd, an award-winning photographer, presented large format portraits of 61 of Australia's most acclaimed painters in their studio environment – be it an inner city loft, suburban kitchen or sandy earth of the outback – containing extraordinary and revealing detail about each artist and their work.

This exhibition was sponsored by Nyrstar Port Pirie. A Gallery Sponsors' Night was held to coincide with the exhibition.



STU  
DI  
O



  
Thumbs up  
for low levels

For the future we all want.

Sponsored by Nyrstar Port Pirie



**arts nsw**  
New South Wales Government

**Museums  
& Galleries  
NSW**

*Patterns of Spirituality – Grace of God*

21 June to 21 July, 2013

Visitors – 1,112

This biennial exhibition was coordinated by the Port Pirie Regional Art Gallery in conjunction with the Anglican Diocese of Willochra and the Catholic Diocese of Port Pirie. Artists submitted two and three dimensional works depicting an aspect of spirituality in their lives or the lives of others.

48 works by 41 artists were judged by Reverend Father Leon Quinn, John Voumard, Lawyer and Art Lover, and Greg Hay, Principal of St. Marks College, Port Pirie.

The winners were announced by Reverend Father Leon Quinn at the exhibition opening on 21 June 2013.

This exhibition was sponsored by Boylan Lawyers, Catholic Church Insurance and Caffe Florence.

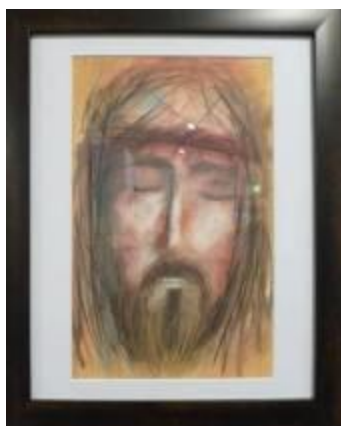


**Major Prize Winner** - Debra Savage (Port Pirie) – *Ascending*

**Artist Resident in the Dioceses Award** - Eloise Gale (Smoky Bay) – *In the Beginning*

**Encouragement Award** - June- Maree Ellaway (Cowell) – *Golden Light*

**Judges Commendation** - David Willson (Port Pirie) – *A Face of Grace*



**Youth Encouragement Award**

Meg Pittaway (Port Pirie) –

*“Jesus” a Gift of Grace from God (image)*



**People’s Choice Award**

Deidre Marshall (Port Pirie) –

*Nature’s Child (image)*



**CAFFE FLORENCE**

## Audit report and Financial Statements 2012-13

**PORT PIRIE REGIONAL ART GALLERY**

**FINANCIAL REPORT**

**FOR THE YEAR ENDED  
30th JUNE  
2013**

# *Port Pirie Regional Art Gallery Inc.*

## **TABLE OF CONTENTS**

1	INDEPENDENT AUDITOR'S REPORT
2	STATEMENT BY BOARD OF MANAGEMENT
3	NOTES TO THE ACCOUNT
4	STATEMENT OF INCOME & EXPENDITURE
5	STATEMENT OF FINANCIAL POSITION

# *Port Pirie Regional Art Gallery Inc.*

## **Independent Auditor's Report**

**for the year ended 30 June 2013**

To the Members of the *PORT PIRIE REGIONAL ART GALLERY INC.*

### **Scope**

The financial report and Board of Management's responsibility

The Board of Management are responsible for the financial report, being a special purpose financial report, that gives a true and fair view of the financial position and performance of the PORT PIRIE REGIONAL ART GALLERY INC., for the year ended 30 June 2013 and that it complies with Accounting Standards in Australia, in accordance with the Associations Incorporation Act 1985. This includes responsibility for the maintenance of adequate accounting records and internal controls that are designed to prevent and detect fraud and error, and for the accounting policies and accounting estimates inherent in the financial report.

The Board of Management have determined that the accounting policies used are consistent with the financial reporting requirements of the *PORT PIRIE REGIONAL ART GALLERY INC.*, and are appropriate to meet the needs of the members.

The financial report comprises the statement of financial positions, statement of income & expenditure, accompanying notes to the financial statements, and the board of management's statement, for the *PORT PIRIE REGIONAL ART GALLERY INC.*

### **Audit Approach**

I conducted an independent audit of the financial report in order to express an opinion on it to the members of the association. The audit was conducted in accordance with Australian Auditing Standards in order to provide reasonable assurance as to whether the financial report is free of material misstatement.

The nature of an audit is influenced by factors such as the use of professional judgment, selective testing, the inherent limitations of internal control, and the availability of persuasive rather than conclusive evidence.

Therefore, an audit cannot guarantee that all material misstatements have been detected. I performed procedures to assess whether in all material respects the financial report presents fairly, in accordance with the *Associations Incorporation Act 1985*, including compliance with Accounting Standards in Australia, and other mandatory financial reporting requirements in Australia, a view which is consistent with our understanding of the association's financial position, and of its performance as represented by the results of its operations, changes in equity and cash flows.

I formed my audit opinion on the basis of these procedures, which included:

- > Examining, on a test basis, information to provide evidence supporting the amounts and disclosures in the financial report
- > Assessing the appropriateness of the accounting policies and disclosures used and the reasonableness of significant accounting estimates made by the committee.

While I considered the effectiveness of management's internal controls over financial reporting when determining the nature and extent of my procedures, my audit was not designed to provide assurance on internal controls. I performed procedures to assess whether the substance of business transactions was accurately reflected in the financial report.

These and my other procedures did not include consideration or judgment of the appropriateness or reasonableness of the business plans or strategies adopted by the management committee of the association.



# *Port Pirie Regional Art Gallery Inc.*

## **Independent Auditor's Report**

**for the year ended 30th June 2013**

Cont/...

### ***Independence***

I am independent of the association, and have met the independence requirements of Australian professional ethical pronouncements and the *Associations Incorporation Act 1985*. In addition to my audit of the financial report, I was engaged to undertake the services disclosed in the notes to the financial statements. The provision of these services has not impaired my independence.

### ***Qualification***

As is common for organisations of this type, it is not practicable for the Board of Management to maintain an effective system of internal control over its cash income prior to initial entry into the accounting records. Accordingly, my audit in relation to these items was limited to the amounts recorded in the books and records for the financial year and I therefore am unable to express an opinion whether proceeds of cash income obtained are complete.

### ***Audit Opinion***

In my opinion, except for the effects on the financial report of such adjustments, if any, as might have been required had the limitation on my audit procedures referred to in the qualification paragraph not existed, the financial report of The PORT PIRIE REGIONAL ART GALLERY INC., is in accordance with:

- a) The Associations Incorporation Act 1985, including:
  - i. Giving a true and fair view of the financial position of The PORT PIRIE REGIONAL ART GALLERY INC. and of its performance for the year ended on 30 June 2013
  - ii. Complying with Accounting Standards in Australia and the Associations Incorporations Act 1985
- b) Other mandatory financial reporting requirements in Australia.

*Signed this 7th day of November 2013*

*Maria C Quinn*

MARIA C QUINN

Institute of Public Accountants (F.I.P.A.)

*Port Pirie Regional Art Gallery Inc.*

**Statement by the Board of Management for  
the year ended 30 June 2013**

In the opinion of the Board of Management of the

**PORT PIRIE REGIONAL ART GALLERY INC.**

the attached financial statements and notes thereto comply with Accounting Standards

the attached Statement of Income & Expenditure is prepared so as to give a true and fair view of the Financial Performance of the association for the year ended 30 June 2013

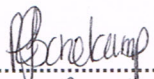
the accompanying Statement of Financial Position is prepared so as to give a true and fair view of the Financial Position of the association as at 30 June 2013.

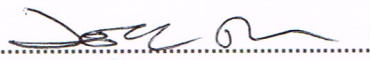
there are reasonable grounds to believe that the Port Pirie Regional Art Gallery Inc. will be able to pay its debts as and when they fall due and payable

that no officer of this association, or any firm of which an officer is a member, or any body corporate in which an officer has a substantial financial interest has received or is entitled to receive any benefit from a contract with this association, nor has any officer received any direct or indirect pecuniary benefit from this association.

**SIGNED** In accordance with a resolution of the Board of Management

This 22 day of November 2013  
On behalf of the Board of Management

  
.....  
(Name: Rosalie Benekamp )  
(Position: Treasurer )

  
.....  
(Name: JONIE TREMBLAY )  
(Position: CHAIRPERSON )

# *Port Pirie Regional Art Gallery Inc.*

**Notes to and forming part of the Accounts  
for the year ended 30 JUNE 2013**

## **1. Statement of Significant Accounting Policies**

These financial statements are a special purpose financial report prepared in order to provide accounts which satisfy the requirements of the Associations Incorporation Act 1985.

It has been determined that this Incorporated Body is not a reporting entity as defined in Statement of Accounting Concepts 1 "Definition of the Reporting Entity" and therefore, there is no requirement to apply accounting concepts or standards in preparation of these statements.

Accounting policies are selected and applied in a manner which ensures that the resultant financial information satisfies the concepts of relevance and reliability, thereby ensuring the substance of the underlying transaction and other events is reported.

The financial statements have been prepared in accordance with the accruals accounting convention. The accounting policies adopted are consistent with those of the previous year, except where otherwise indicated.

## **2. Income Tax**

Provisions of the Income Tax Assessment Act exempt the income earned by the *PORT PIRIE REGIONAL ART GALLERY INC.* from assessment of taxation.

## **3. Australian Business Number / GST Status / Charity Status**

The *PORT PIRIE REGIONAL ART GALLERY INC.* holds an ABN Number.

It is registered for GST (Goods & Services Tax) and ITEC (Income Tax Exempt Charity)

## **4. Employee Entitlements**

Employee entitlements comprise wages and salaries, annual, non-accumulating sick and long service leave, and contributions to superannuation plans.

Liabilities for wages and salaries expected to be settled within 12 months of balance date are not recognised in other payables in respect of employees services up to the reporting date.

Liabilities for annual leave in respect of employees services up to the reporting date which are expected to be settled within 12 months of balance date are recognised in the provision for annual leave.

Both liabilities are measured at the amounts expected to be paid when the liabilities are settled.

Liabilities for non-accumulating sick leave are recognised when the leave is taken and are measured at the rates paid or payable.

The liability for long service leave is recognised in the provision for employee benefits and measured at the present value of expected future payments to be made in respect of services provided by employees up to the reporting date using the projected unit credit method.

Consideration is given to anticipated future wage and salary levels, experience of employee departures, and periods of service.

The association pays contributions to certain defined contribution superannuation plans. Contributions are recognised in the income statement when they are due.

The association has no obligation to pay further contributions to these plans if the plans do not hold sufficient assets to pay all employee benefits relating to employee service in current and prior periods.

# *Port Pirie Regional Art Gallery Inc.*

**Notes to and forming part of the Accounts  
for the year ended 30 JUNE 2013**

## **5. Revenue recognition**

Revenue is recognised when the association is legally entitled to the income and the amount can be quantified with reasonable accuracy. Revenues are recognised net of the amounts of goods and services tax (GST) payable to the Australian Taxation Office.

## **6. Government funding**

The association's activities include services/projects supported by grants received from the federal, state and local governments. Grants received on the condition that specified services are delivered, or conditions are fulfilled, are considered reciprocal. Such grants are initially recognised as a liability and revenue is recognised as services are performed or conditions fulfilled. Revenue from non-reciprocal grants is recognised when receivable.

## **7. Expenditure**

Note 3 All expenditure is accounted for on an accruals basis and has been classified under headings that aggregate all costs related to the category. Where costs cannot be directly attributed to a particular category they have been allocated to activities on a basis consistent with use of the resources.

## **8. Trade and other receivables**

Trade receivables, which comprise amounts due from sales and from services provided, are recognised and carried at original invoice amount. Normal terms of settlement vary from seven to 90 days. The notional amount of the receivable is deemed to reflect fair value.

## **9. Depreciation**

Items of plant and equipment acquired pre 1/7/12 have not been depreciated over their useful lives to the association.

Items of plant and equipment acquired post 1/7/12 have been depreciated over their useful lives to the association.

## **10. Trade creditors and other payables**

Trade payables and other payables represent liabilities for goods and services provided to the association prior to the end of the financial year that are unpaid. These amounts are usually settled in 30 days. The notional amount of the creditors and payables is deemed to reflect fair value.

## **11. Deferred income**

The liability for deferred income, if brought to account, is the unutilised amounts of grants received on the condition that specified services are delivered or conditions are fulfilled. The services are usually provided or the conditions usually fulfilled within 12 months of receipt of the grant. Where the amount received is in respect of services to be provided over a period that exceeds 12 months after the reporting date or the conditions will only be satisfied more than 12 months after the reporting date, the liability is discounted.

# Port Pirie Regional Art Gallery Inc.

Notes to and forming part of the Accounts  
for the year ended 30 JUNE 2013

## 12. Specific Noted Items

### (i) Recurrent Funding

Recurrent Operational Funding:

Port Pirie Regional Council	\$76,500
Country Arts SA	\$25,000
Port Pirie Regional Council Art Prize	\$5,000

### (ii) Sponsorship

Sponsorships are designated as "In Kind", a monetary value has been deemed in relation to services provided to the association:

Design Services (In-Kind)	\$2,500
Accountancy (In Kind)	\$2,500
Southern Cross TV (In Kind)	\$30,000
Automatic Print (In-Kind)	\$2,500

### (ii) Stock on hand

Cost value of Gallery trading stock held for resale	\$500
---	-------

### (iii) Gallery Equipment

Cost value of capital equipment items purchased excluding artworks.	\$38,647
Accumulated Depreciation	\$28
Depreciation Schedule attached	

### (iv) Trade Creditors

Invoices received pertaining to 2012/2013 year expenses, settled post June 30th.	\$558
Other	\$0

### (v) GST Liability

Current Year	
GST liability as at 30th June	\$1,669

### (vi) Payroll Liability

PAYG Tax Withheld	\$4,325
Superannuation Guarantee Levy	\$439
Workcover Levy	\$505
Accrued Wages	\$1,446
Provision for Employee Leave Entitlements - Current	\$3,331
Provision for Employee Leave Entitlements - Non Current	\$27
	<u>\$10,073</u>

**Port Pirie Regional Art Gallery Inc**

**Statement of Income & Expenditure**

1 July 2012 to 30 June 2013

	This Year	Last Year
<b>Income</b>		
<u>Recurrent Funding</u>		
Port Pirie Regional Council	76,500	75,000
Country Arts SA	25,000	25,000
PPPC Art Prize	<u>5,000</u>	<u>5,000</u>
Total Recurrent Funding	<u>106,500</u>	<u>105,000</u>
<u>Grants Funding</u>		
Art Awards		
Nystar Exhibition	3,400	
Arts SA	<u>1,804</u>	
Total Project Grants	<u>5,204</u>	<u>0</u>
<u>Membership</u>		
Membership	<u>1,805</u>	<u>1,105</u>
Total Membership	<u>1,805</u>	<u>1,105</u>
<u>Public Programmes</u>		
Workshop Fees	0	0
Art Bus	831	936
Art Prize Entry Fees	<u>430</u>	<u>1,718</u>
Total Public Programmes	<u>1,261</u>	<u>2,654</u>
<u>Other</u>		
Interest	767	665
Other	30	50
Reimbursements	<u>1,264</u>	<u>1,227</u>
Total Other	<u>2,061</u>	<u>1,942</u>
<u>Fundraising</u>		
Donations	1,554	1,080
Donations - Gift Fund	700	370
Fundraising	<u>313</u>	<u>138</u>
Total Fundraising	<u>2,567</u>	<u>1,587</u>
<u>Sponsorship</u>		
Awards	1,500	3,000
Design Services (In-Kind)	2,500	2,500
Accountancy (In Kind)	2,500	2,500
Southern Cross TV (In Kind)	30,000	30,000
Automatic Print (In-Kind)	<u>2,500</u>	<u>2,500</u>
Total Sponsorship	<u>39,000</u>	<u>40,500</u>
<b>Total Income</b>	<b><u>158,398</u></b>	<b><u>152,788</u></b>

**Port Pirie Regional Art Gallery Inc**

**Statement of Income & Expenditure**

1 July 2012 to 30 June 2013

	This Year	Last Year
<u>Sales</u>		
Artwork Sales	3,154	3,904
Art Cards & Materials Sales	1,812	636
Commission	1,022	1,227
Total Sales	<u>5,988</u>	<u>5,767</u>
<u>Less Purchases</u>		
Artist Payments	3,381	4,811
Consignment Payments	381	38
Purchases for resale	775	344
Postage	0	261
Total Purchases	<u>4,537</u>	<u>5,453</u>
<b>Profit on Sales</b>	<b><u>1,451</u></b>	<b><u>314</u></b>
 <b>Expenses</b>		
<u>Administrative Expenses</u>		
Acquisition Fund	350	0
Advertising	3,351	2,048
Audit Fees	400	350
Bank Charges	292	338
Board Expenses	287	672
Depreciation	28	0
Electricity	4,237	3,140
Equipment Maintenance	87	236
Freight & Packaging	85	-2
Insurance	1,388	1,106
Internet Fees	27	684
Kitchen Supplies	606	688
Other & Adjustments	59	0
Postage	1,615	1,407
Printing	3,221	1,870
Stationery	1,253	1,010
Subscriptions, Licenses & Fees	1,153	1,691
Telephone	1,877	1,496
Total Administrative Expenses	<u>20,316</u>	<u>16,735</u>
 <u>In-Kind-Sponsorship</u>		
Pisani Accounting	2,500	2,500
Jan Pana Graphic Design	2,500	2,500
Southern Cross Television	30,000	30,000
Automatic Print	2,500	2,500
Total In-Kind-Sponsorship	<u>37,500</u>	<u>37,500</u>

**Port Pirie Regional Art Gallery Inc**

**Statement of Income & Expenditure**

1 July 2012 to 30 June 2013

	This Year	Last Year
<u>Staffing</u>		
Superannuation	3,590	2,097
Workcover	667	855
Professional Development	0	514
Wages & Salaries	79,776	75,931
Staffing Expenses	<u>189</u>	<u>457</u>
Total Staffing	<u>84,221</u>	<u>79,853</u>
<u>Exhibitions</u>		
Development	350	0
Fees & Prizes	13,899	8,650
Installation	2,463	1,901
Expenses - Openings	1,463	1,569
Total Exhibitions	<u>18,175</u>	<u>12,120</u>
<u>Materials &amp; Equipment</u>		
Equipment Purchases	<u>0</u>	<u>1,267</u>
Total Materials & Equipment	<u>0</u>	<u>1,267</u>
<u>Volunteer Program</u>		
Volunteer Expenses	1,005	179
Volunteer Honorariums	<u>4,920</u>	<u>2,550</u>
Total Volunteer Program	<u>5,925</u>	<u>2,729</u>
<u>Associated Programmes</u>		
Sponsorship Program	120	120
Public Program	<u>2,430</u>	<u>716</u>
Total Associated Programmes	<u>2,550</u>	<u>836</u>
<b>Total Expenses</b>	<b><u>168,687</u></b>	<b><u>151,040</u></b>
<b>Net Surplus (-Deficit) this year</b>	<b><u><u>-8,839</u></u></b>	<b><u><u>2,062</u></u></b>



**Port Pirie Regional Art Gallery Inc**

**Statement of Financial Position**

30 June 2013

	<b>This Year</b>	<b>Last Year</b>
<b>Assets</b>		
<u>Current Assets</u>		
Cash On Hand	280	210
Cash at Bank		
Westpac - Cheque Account	521	27,643
Westpac - DMC (Debit Card A/c)	500	0
Westpac - Maxi Saver (Provisions A/c)	19,911	0
Westpac - Business Cash Reserve	2	11,665
Total Cash	<u>21,214</u>	<u>39,518</u>
Stock on Hand	<u>870</u>	<u>0</u>
Total Current Assets	<u>22,084</u>	<u>39,518</u>
<u>Fixed Assets</u>		
Gallery Equip. at Cost	38,647	38,137
Less Accumulated Depn	<u>-28</u>	<u>0</u>
Total Fixed Assets	<u>38,619</u>	<u>38,137</u>
<b>Total Assets</b>	<b><u>60,703</u></b>	<b><u>77,655</u></b>
<b>Liabilities</b>		
<u>Current Liabilities</u>		
Trade Creditors	558	9,915
Auspiced Grants	272	272
GST Liability	1,669	1,065
<u>Payroll Liabilities</u>		
PAYG Tax Withheld	4,325	1,535
Superannuation Payable	439	511
Workcover Payable	505	586
Accrued Wages	1,446	1,079
Provision Employee Leave Entitlements	<u>3,331</u>	<u>5,732</u>
Total Payroll Liabilities	<u>10,046</u>	<u>9,442</u>
Total Current Liabilities	<u>12,545</u>	<u>20,694</u>
<u>Non Current Liabilities</u>		
Provision Employee Leave Entitlements	<u>27</u>	<u>0</u>
Total Non Current Liabilities	<u>27</u>	<u>0</u>
<b>Total Liabilities</b>	<b><u>12,572</u></b>	<b><u>20,694</u></b>
<b>Net Assets</b>	<b><u>48,131</u></b>	<b><u>56,960</u></b>
<b>Accumulated Funds</b>		
Balance b/fwd	56,960	54,897
Current Year Earnings	<u>-8,839</u>	<u>2,062</u>
<b>Total Accumulated Funds</b>	<b><u>48,131</u></b>	<b><u>56,960</u></b>

## Port Pirie Regional Art Gallery Inc

### Attachment 1

#### Asset Register

	2013	2012
<b>Computer equipment</b>		
Computer equipment at cost	21,425	21,027
Less: Accumulated depreciation	<u>27</u>	<u>0</u>
<b>Total Computer equipment</b>	<b><u>21,398</u></b>	<b><u>21,027</u></b>
<b>Furniture and Fittings</b>		
Furniture and Fittings at cost	17,021	17,021
Less: Accumulated depreciation	<u>0</u>	<u>0</u>
<b>Total Furniture and Fittings</b>	<b><u>17,021</u></b>	<b><u>17,021</u></b>
<b>Office equipment</b>		
Office equipment at cost	201	89
Less: Accumulated depreciation	<u>1</u>	<u>0</u>
<b>Total Office equipment</b>	<b><u>200</u></b>	<b><u>89</u></b>
<b>Total Equipment</b>	<b><u>38,619</u></b>	<b><u>38,137</u></b>

#### Reconciliation of Non-Current Assets

The following table shows the movement of Non-Current Assets during 2012-13

	Computer equipment \$	Furniture and fittings \$	Office equipment \$	Total Tangible Assets
<b>Carrying amount at beginning of Period</b>	21,027	17,021	89	<b>38,137</b>
Additions	398	0	112	<b>510</b>
Disposals	0	0	0	<b>0</b>
Depreciation	(\$27)	0	1	<b>(\$26)</b>
<b>Carrying amount at end of Period</b>	<b><u>21,398</u></b>	<b><u>17,021</u></b>	<b><u>200</u></b>	<b><u>38,619</u></b>